

# CylinderBoss Connector



Quick Start Guide and User Manual

[info@cylinderboss.com](mailto:info@cylinderboss.com)  
<https://www.cylinderboss.com/>

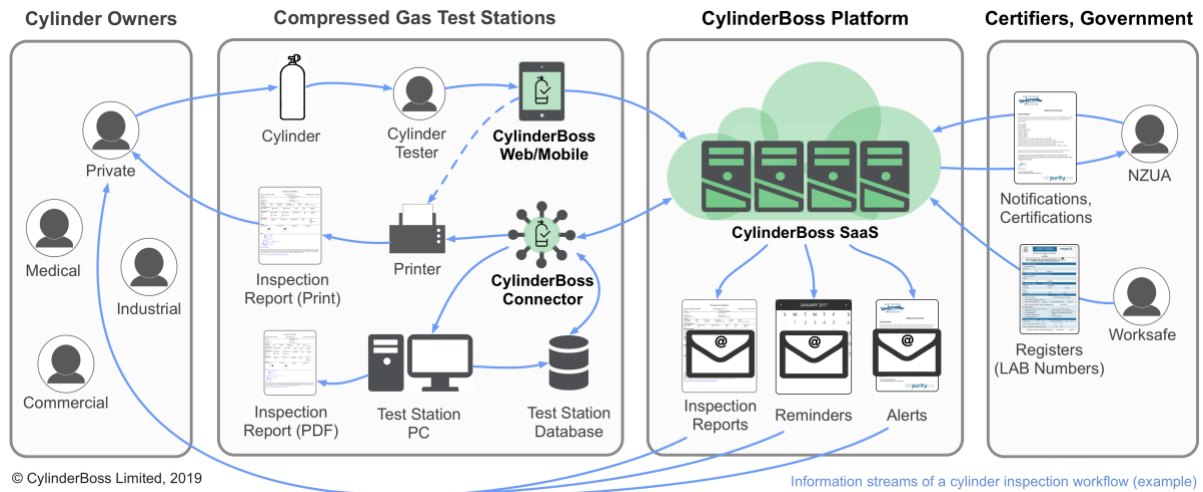
Axel Busch  
v1.7  
2021-11-11

# Table of Contents

Overview.....	3
Quickstart .....	4
Installation .....	5
System Requirements .....	5
Download & Installation .....	5
Updates .....	5
Operation.....	6
Start.....	6
Signing In.....	6
Settings Wizard .....	6
Step 1: Integrate with EVE .....	7
Step 2: EVE Cloud or local EVE installation .....	7
Step 3: EVE Cloud connection .....	8
Step 3: Local EVE connection .....	8
Step 4: EVE store settings.....	10
Step 5: Sync and Archive settings .....	10
Step 6: Print settings .....	11
Service Control.....	12
Sync History and Document Archive .....	14
Creating a SQL Server username/password.....	15
EVE Service Bookings.....	16
Links .....	16
Trademarks.....	17
Contact.....	17

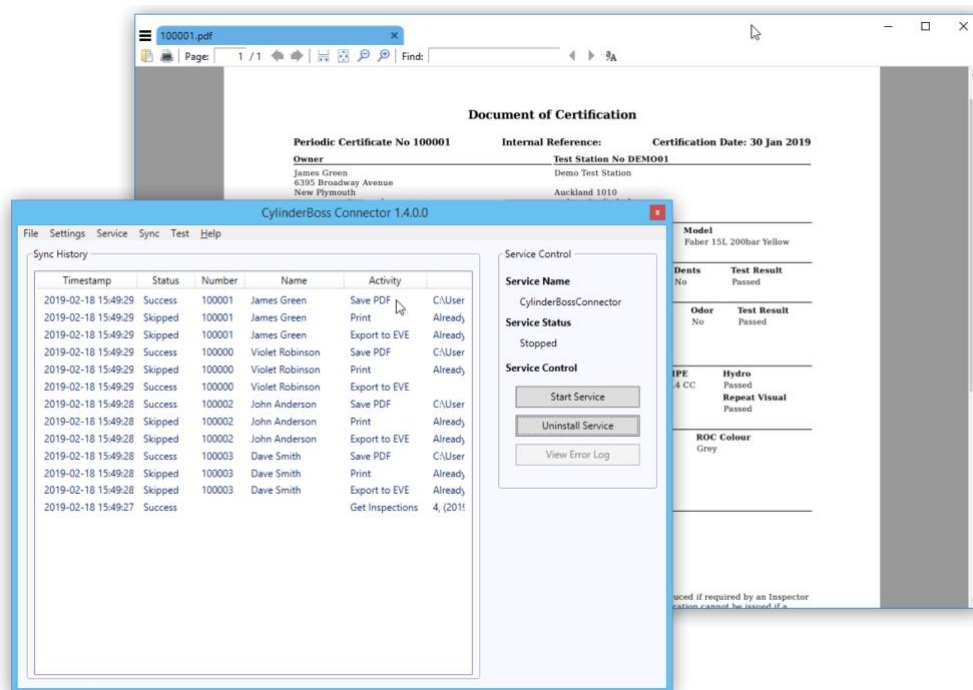
# Overview

CylinderBoss is a mobile productivity tool that speeds up hydrostatic and visual cylinder inspections, maintains your inspection records, and integrates with your existing software to eliminate double data entry.



CylinderBoss Platform Overview

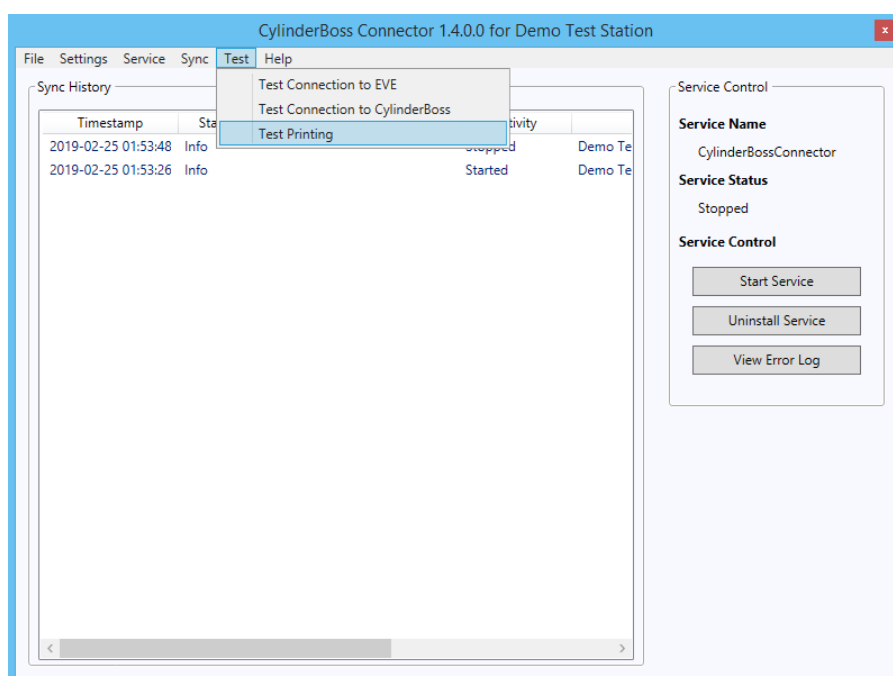
The CylinderBoss Connector automatically saves and prints copies of inspection reports, and syncs with your local EVE installation to avoid tedious double data entry. The connector consists of two parts - a *Windows Service* that runs in the background and that does the actual work, and a visual *Windows Application* that makes it easy to configure and control the background service.



CylinderBoss Connector screenshots

## Quick Start Guide

1. Download the installer from <https://www.cylinderboss.com/downloads/>.
2. Run the installer, it will guide you through the setup process.
3. Locate and run “CylinderBoss Connector” in the Windows/Start menu.
4. Sign in using your CylinderBoss username/password, or click the link provided to create a new account.
5. The program will launch a six-page configuration wizard.
  - a. Answer the questions and test your settings at every step with the buttons provided.
  - b. If you use EVE in a local network and the CylinderBoss connector is installed on a different computer from the EVE server, it might be necessary to create a *SQL Server Username/Password* with the *EVE Database Utilities*.
  - c. Click *Finish*.
6. Click on each entry in the *Test* menu to ensure everything is configured correctly.
7. In the Service Control section, click *Install Service*, then click *Start Service*.
8. Go to <https://www.cylinderboss.com/> and sign in to the CylinderBoss Web App.
  - a. Complete a cylinder inspection with TEST as the inspection number.
9. Go back to the CylinderBoss Connector App.
  - a. The *Sync History* section will show you the progress of the sync process.



Verify your configuration by clicking on the entries in the *Test* menu.

# Installation

## System Requirements

The CylinderBoss Connector has the same system requirements as EVE 5.12. If you're already running EVE 5.12 (or newer) on the computer that you intend to install CylinderBoss on, you're good to go.

**Minimum:**

- Windows 7 SP1

**Recommended:**

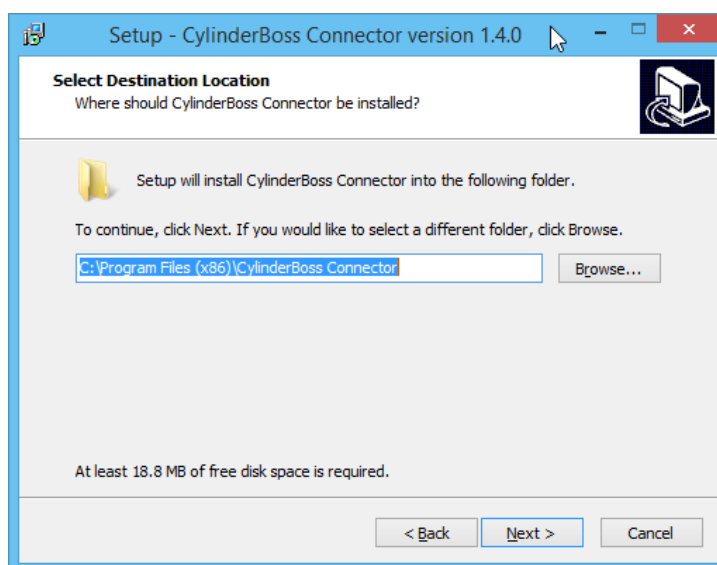
- Windows 10

If you're unsure, just install and start the CylinderBoss Connector. It will notify you if you need to install any other software. On Windows Vista and Windows 7 this could be the following software:

- Microsoft .NET Framework 4.8:  
<https://dotnet.microsoft.com/download/dotnet-framework-runtime/net48/>

## Download & Installation

Please download the installer from <https://www.cylinderboss.com/downloads/>. Double-click to run the installer; it will guide you through the setup process.



## Updates

Updating to a newer version of the CylinderBoss Connector is easy, just run the installer again. For the smoothest experience we recommend following these five simple steps:

1. Open the CylinderBoss Connector control application.

2. Click “Stop Service” to stop the *CylinderBossConnector* service.
3. Exit the CylinderBoss Connector control application.
4. Download the latest version from <https://www.cylinderboss.com/downloads/>.
5. Run the installer for the new version.

Your previous settings and sync history will be preserved.

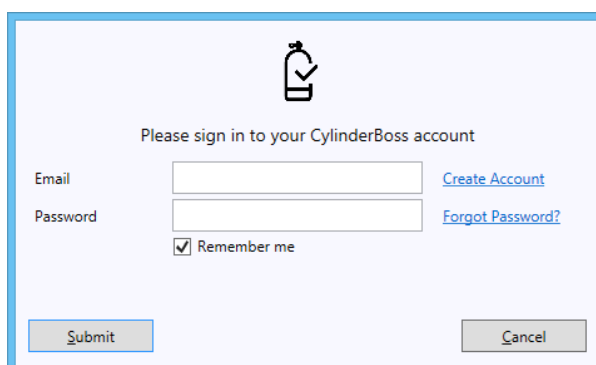
# Operation

## Start

Open the Windows/Start menu and select “CylinderBoss Connector”. If you find it hard to locate the entry, just start typing “CylinderBoss” on your keyboard while the Windows/Start menu is open. Windows will highlight the CylinderBoss Connector entry. Then hit the ENTER key.

## Signing In

After starting the CylinderBoss Connector you will be asked to sign in to your CylinderBoss account.



The screenshot shows a sign-in dialog box with a light blue background and a blue border. At the top center is a lock icon with a checkmark. Below it, the text reads "Please sign in to your CylinderBoss account". There are two input fields: "Email" and "Password". To the right of the "Email" field is a blue link "Create Account". To the right of the "Password" field is a blue link "Forgot Password?". Below the "Password" field is a checked checkbox labeled "Remember me". At the bottom left is a "Submit" button, and at the bottom right is a "Cancel" button.

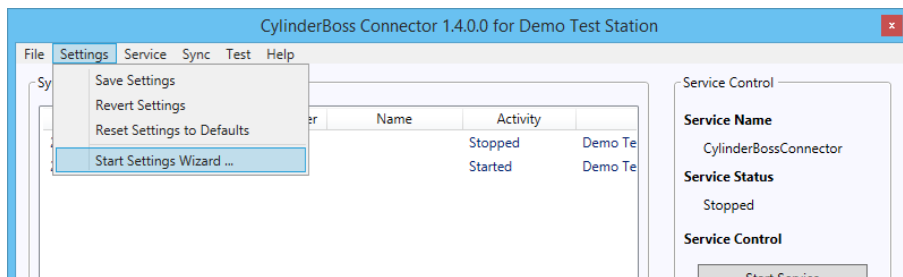
If you don't have an account yet or can't quite remember the password, click on the appropriate links and you will be directed to the CylinderBoss website where you can create an account or reset your password.

If you sign in for the first time, or the configuration was not completed in a previous session, the CylinderBoss Connector will launch the six-page configuration wizard.

## Settings Wizard

The CylinderBoss Connector includes a six-page wizard to easily configure all necessary settings. At every step the connector tries to automatically find the correct settings using the input provided in previous steps. This includes the printer, the EVE database, and other parameters required to create Service Bookings in EVE.

If you would like to change your settings at any time, just start the settings wizard again with the entry *Start Settings Wizard* in the *Settings* menu.

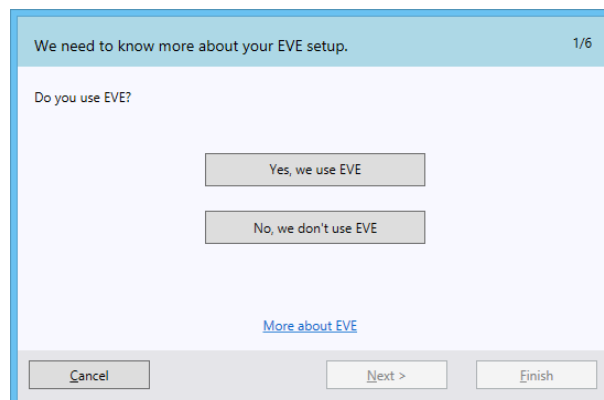


The entry *Revert Settings* discards all changes made since the CylinderBoss Connector was last started.

The entry *Reset Settings to Defaults* discards all changes made since the CylinderBoss Connector was installed.

## Step 1: Integrate with EVE

EVE is a popular software for managing dive centres. The CylinderBoss Connector provides end-to-end data integration with EVE to eliminate the need for double data entry.

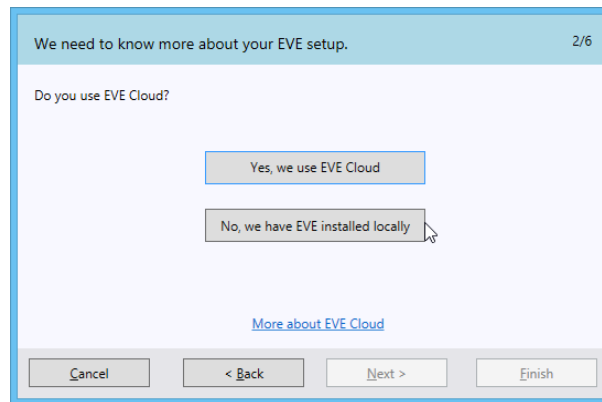


Please let us know if you are using a different system and would also take advantage of productivity gains offered by a bi-directional data interface.

## Step 2: EVE Cloud or local EVE installation

If you have answered *No* in step 1 go to step 5.

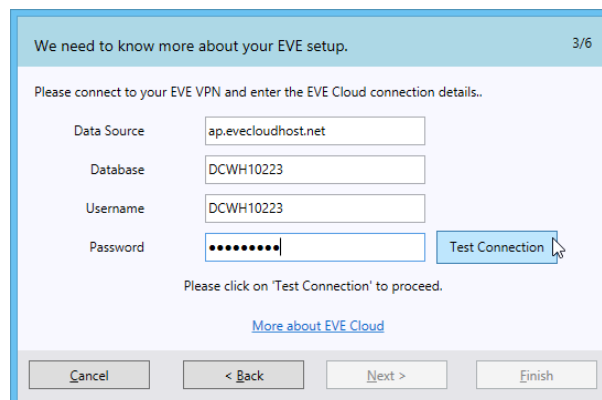
If you have answered *Yes* in step 1, the next question is about the nature of your EVE installation. This can either be a Cloud installation, or a local installation.



## Step 3 a): EVE Cloud connection settings

If you have answered *Yes* in step 2, the next question is about the connection settings to your EVE Cloud installation. If you have answered *No* in step 1 go to step 5.

EVE Cloud provides you with a VPN connection to a database hosted in the Cloud. Please ensure that your VPN connection is active and have your database connection settings at hand.

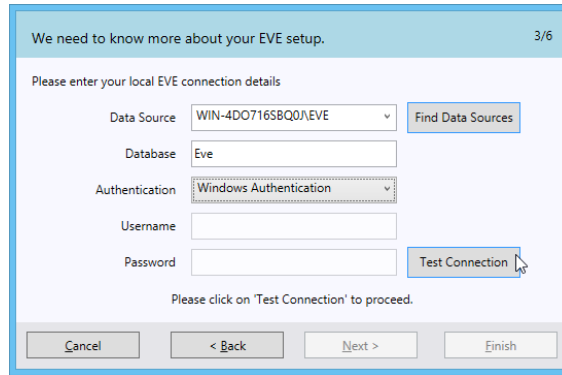


Please click *Test Connection* to ensure the configuration is correct and to unlock the *Next* button. If the connection test fails after takes a long time (30 seconds) it is likely that the VPN connection to EVE Cloud is not active or configured on this PC.

## Step 3 b): Local EVE connection settings

If you have answered *No* in step 2, the next question is about the connection settings to your local EVE installation. If you have answered *No* in step 1 go to step 5.

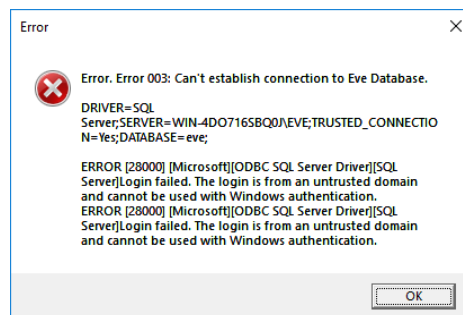




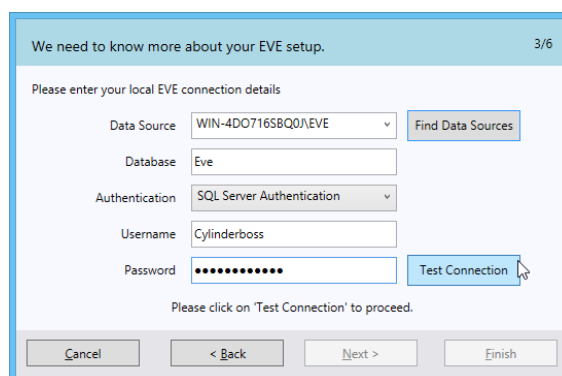
If the CylinderBoss Connector is installed on the same computer as the EVE Server the simple *Windows Authentication* can be used and nothing else needs to be configured.

Please click *Find Data Source* if nothing is selected. Then choose a data source and click *Test Connection*.

An error message when testing the connection means *Windows Authentication* is not available. This can be the case when the EVE Server and CylinderBoss Connector are installed on different computers.



In this case please select *SQL Server Authentication* from the authentication selector and enter the settings for *SQL Server Username* and *SQL Server Password*.



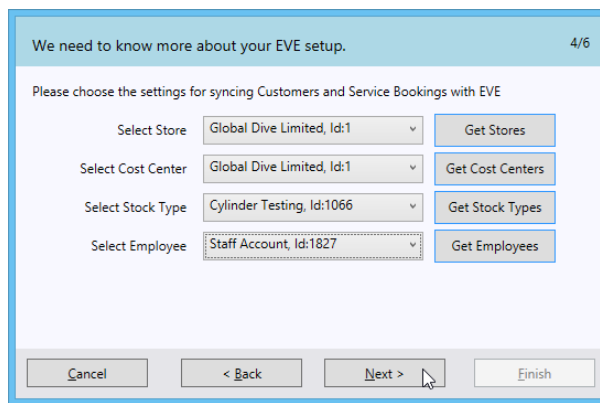
*EVE Clients* typically connect with the username *EVEUser* to the *EVE Server*. You can use the same username/password for CylinderBoss. However, we recommend you create a separate username/password combination using the *EVE Database Utilities* installed on the *EVE Server*.

Please read the section [Creating a new EVE Database User](#).

## Step 4: EVE store settings

If you have answered *Yes* in step 1, the next question is about the connection settings to your local EVE installation. This is the same for EVE Cloud or a local EVE installation. If you have answered *No* in step 1 go to step 5.

In this step we configure settings required to import Customer records from EVE and to create Service Bookings in EVE. This includes settings like the Store, Cost Center, Stock Type for cylinder inspections, and the Employee under who's name the records should be created in EVE.



This table shows the logic that is used to select the most likely entries:

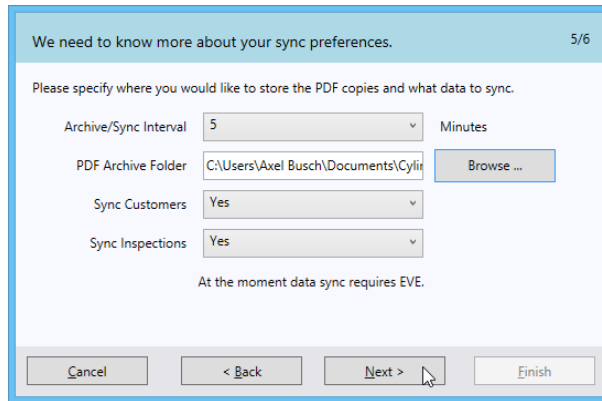
Setting	Value
Store	The first entry that does not contain the words Test or Training
Cost Center	The first entry that does not contain the words Test or Training
Stock Type	The first entry that contains the words Cylinder, Tank, Test, or Inspection. Otherwise the first entry that does not contain the words Test or Training.
Employee	The first entry that contains combinations of the words Cylinder, Tank, Test, or Inspection. Otherwise the last entry that does not contain the words Test or Training.

## Step 5: Sync and Archive settings

If you have answered *No* in step 1 you will go directly to this step and it will show as step 2. Click *Back* if you would like to configure the integration with EVE.

CylinderBoss Connector checks in a fixed interval for recently completed cylinder inspections. A PDF copy of the inspection report (Document of Certification) is saved in a local folder for every completed inspection.

Windows indexes these documents and allows you to quickly find documents by any text fragment with the search functionality of the *File Explorer*.



If configured, CylinderBoss can also sync Customer and Inspection with EVE ready for invoicing. Please see chapter *EVE Service Bookings* for an example of exported visual and hydrostatic inspections.

Setting	Value
Archive/Sync Interval	The CylinderBoss Connector checks in a fixed interval for new or updated Customer and Inspection records. This setting configures the duration of that interval in minutes.
PDF Archive Folder	Folder where signed copies of the certification document are stored in PDF format. The documents are stored in subfolders for Year/Month/Day below the specified folder.
Sync Customers	When you start typing a customer name during an inspection, CylinderBoss can present your existing customers for selection to save you valuable time and avoid errors commonly associated with double data entries. Select <i>Yes</i> if you would like to have your customer records available in CylinderBoss for quick lookup. This option is only available if EVE integration is configured.
Sync Inspections	CylinderBoss can create Service Bookings in EVE for every completed inspection. You can then quickly send this to a new invoice. Select <i>Yes</i> if you would like to have CylinderBoss create Service Bookings in EVE.

## Step 6: Print settings

If you have answered *No* in step 1 this step will show as step 2.

The Print settings control if a document of certification is sent to the printer, what printer, and how many copies are to be printed per document.

Because the cylinder owner receives an electronic copy of the document of certification by email, it is not strictly necessary to print a copy. Some test stations find it easier to identify cylinders during pick up when the Document of Certification is attached to the cylinder.

The screenshot shows a dialog box with the following elements:

- Title bar: "We need to know more about your printing preferences." (6/6)
- Text: "Please specify your printing preferences."
- Form fields:
  - "Print Inspection Reports?" with a dropdown menu set to "Yes".
  - "Printer" with a dropdown menu set to "Brother HL-2270DW series#:1".
  - "Number of Copies" with a dropdown menu set to "1".
- Buttons: "Find Printers", "Print Test Page", "Cancel", "< Back", and "Finish".

Setting	Value
Print Inspections	Select <i>Yes</i> if you want the software to automatically print one or more copies of the inspection report for each completed cylinder inspection. Select <i>No</i> if you want no documents to be printed.
Select Printer	The printer that shall be used for printing. Please make sure this is a A4 printer. CylinderBoss automatically selects the default printer.
Number of Copies	How many copies of the inspection report to print per completed cylinder inspection.

We recommend that you click on *Print Test Page* after changing the printer settings.

You can always print manually from the CylinderBoss App using Apple AirPrint, Google Cloud Print, or other printing Apps. With some networks and printers this works very well, in other situations we have found that print jobs can get stuck in the Cloud and require manual intervention. Because reliability and automation are a key concern, we have integrated reliable automated printing into the CylinderBoss Connector that does not require third party Cloud services.

## Service Control

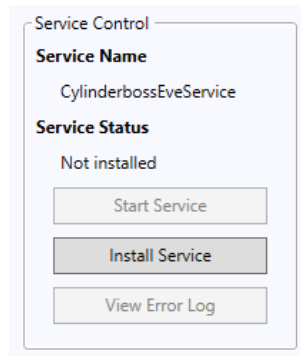
The CylinderBoss Connector consists of two parts:

1. a *Windows Service* that runs in the background and does the actual work, and

2. a *Windows Application* that makes it easy to configure and control the background service.

The program you are interacting with is the *Windows Application*, but the *Windows Service* that runs in the background without a program window does the actual work. After installation, the *Windows Service* is started automatically by the operating system when the computer is turned on.

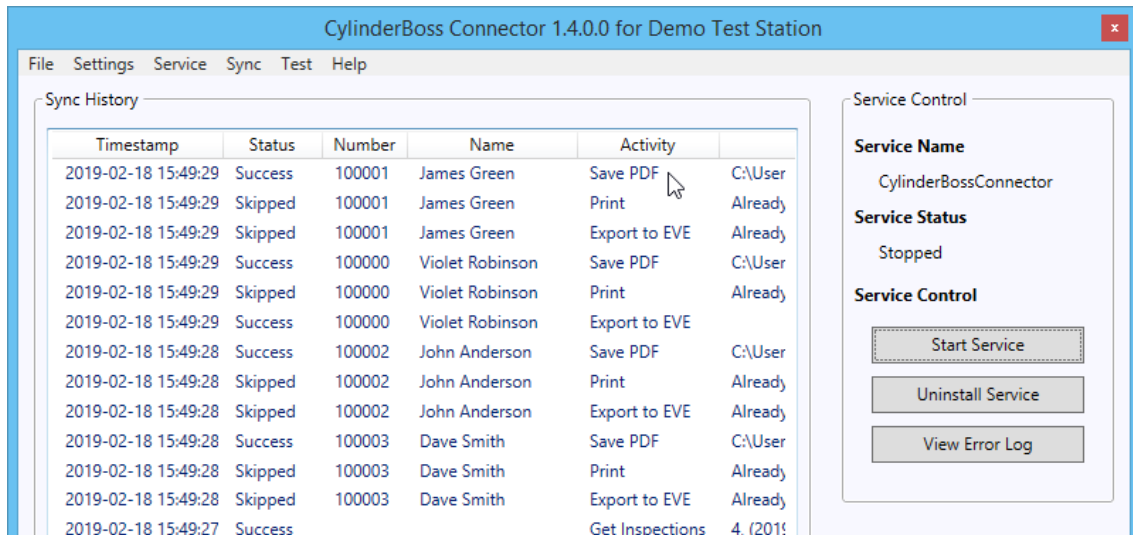
You can run the connector application at any time to check on the background service and control it manually using the *Service Control* section.



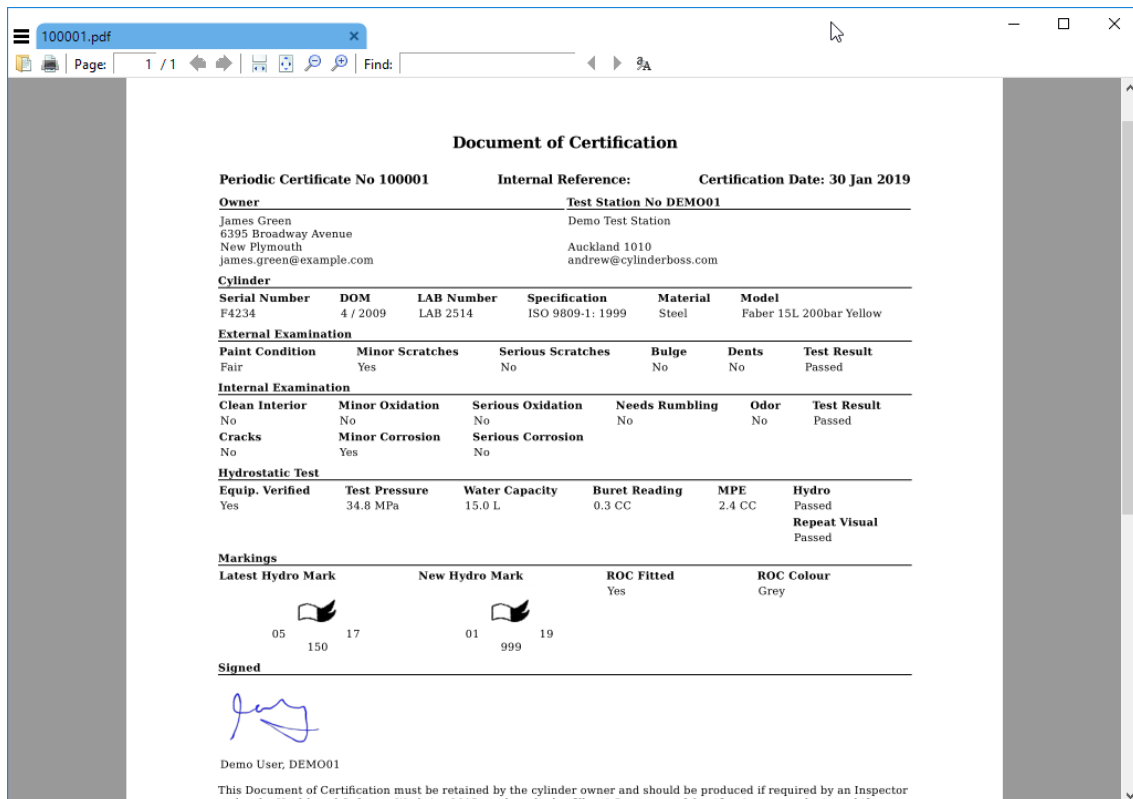
Before the background service can be started, it has to be installed. Click *Install Service*. The *Service Status* should change from *Not installed* to *Installed*. You can now start and stop the service.

## Sync History and Document Archive

The CylinderBoss Connector keeps a log of all transactions. You can inspect this log in the sync history list. The list updates automatically every five seconds and shows new entries at the top.



If you would like to see the PDF copy of the Document of Certification for particular inspections, simply double-click on the appropriate list entry. The PDF document will open in your installed PDF reader application.



If you don't have a PDF reader application installed, or find your existing PDF reader awkward to use, we recommend having a look at the free Sumatra PDF Reader.

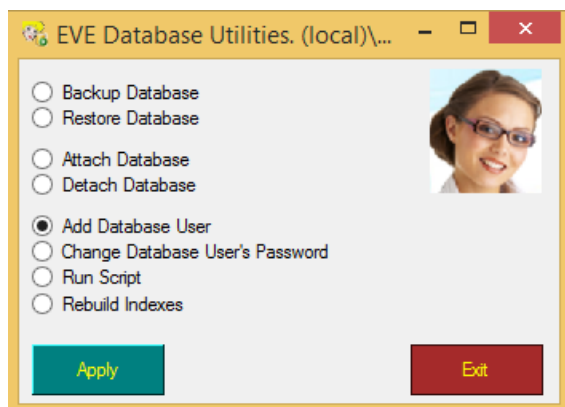
- Sumatra PDF Reader  
<https://www.sumatrapdfreader.org/download-free-pdf-viewer.html>

## Creating a new EVE Database User

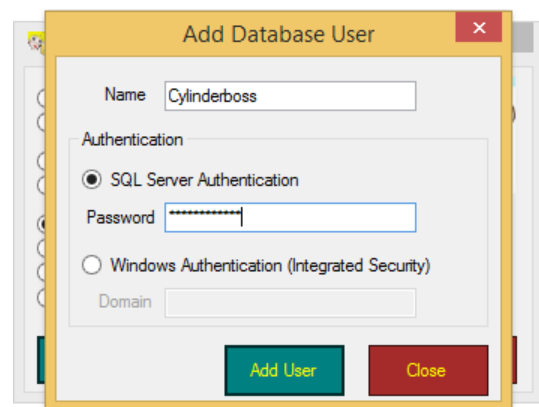
If EVE Server and CylinderBoss Connector are installed on different computers it can be necessary to use SQL Server Authentication with a username and password.

The EVE Clients connects with the username EVEUser to the EVE Server. You can use the same username/password for CylinderBoss. However, we recommend you create a separate username/password combination using the EVE Database Utilities installed on the EVE Server.

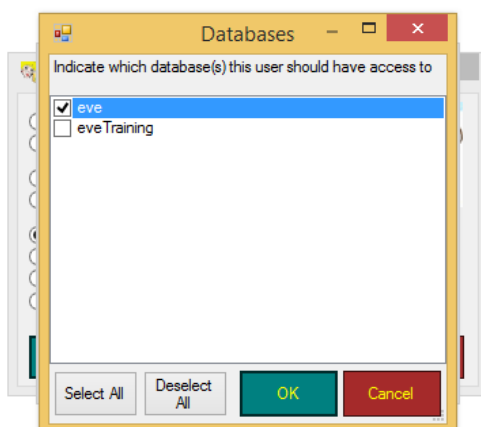
To create a new username and password, sign in to the computer that runs the EVE Server and start the program "EVE Database Utilities" from the Start/Windows menu. Then choose "Add Database User" and follow the instructions provided:



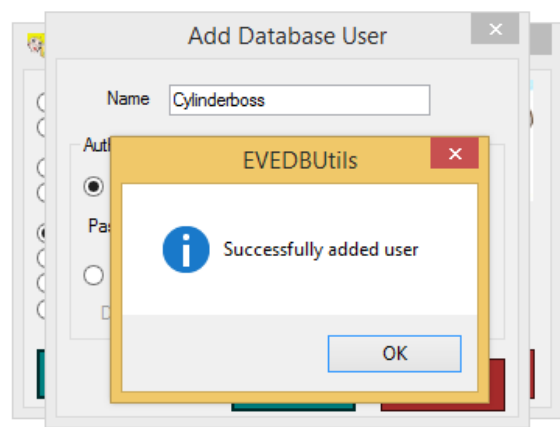
Step 1



Step 2



Step 3



Step 4

## EVE Service Bookings

CylinderBoss can create Service Bookings in EVE for every completed inspection. The Service Bookings contains all relevant information from the inspection, including cylinder serial number, condition, and test pressures for hydrostatic inspections.

Service Booking: #3315 (Dave Smith)

Booking # 3315 Ticket # [ ] Status Valid  
 Cost Center Dive Limited Invoice # [ ]  
 Employee Andrew Created 16/02/2019 10:25:08 a.m.  
 Customer Dave Smith Last Updated 18/02/2019 7:29:25 p.m.

Receive Item(s) Summary Cylinder Testing SN:16/1233/089

General Cylinder Specific Information

**External Examination**  
 Fair  
 Abrasions / Scratches  
 None  Minor  Serious  
 Pass  Fail

**Internal Examination**  
 Minor Oxidation  
 Approved ring fitted (ROC)  
 Grey  
 Pass  Fail

**Threading**  
 Pass  Fail

**Valve**  
 Burst disc replaced  
 Other service needed

**Hydro**  
 03/17  
 2.44 CC 0.63 CC  
 Equipment accuracy verified  
 Approved ring fitted (ROC)  
 Grey  
 Hydro  Pass  Fail  N/A  
 Repeat Vis  Pass  Fail  N/A

**Cylinder Condition**  
 Pass  
 Fail  
 100003

Employee Andrew  
 Customer  
 Technicians  
 Action Taken  
 Parts

Send To New Invoice New Save Close

## Links

- CylinderBoss Mobile  
<https://www.cylinderboss.com/>
- CylinderBoss Connector  
<https://www.cylinderboss.com/downloads/>
- Microsoft .NET Framework 4.8  
<https://dotnet.microsoft.com/download/dotnet-framework-runtime/net48/>
- Sumatra PDF Reader  
<https://www.sumatrapdfreader.org/download-free-pdf-viewer.html>
- Microsoft ODBC Driver for SQL Server  
<https://docs.microsoft.com/en-us/sql/connect/odbc/download-odbc-driver-for-sql-server>



## Trademarks

- All product names, trademarks and registered trademarks are property of their respective owners. All company, product and service names used in this website are for identification purposes only. Use of these names, trademarks and brands does not imply endorsement.
- CylinderBoss is a trademark or registered trademark of CylinderBoss Limited in New Zealand and/or other countries.
- Microsoft and Windows are trademarks or registered trademarks of Microsoft Corporation in the United States and/or other countries.
- Apple, Macintosh, Mac OS, and OS X are trademarks or registered trademarks of Apple Inc. in the United States and/or other countries.
- All other trademarks cited herein are the property of their respective owners.

## Contact

CylinderBoss Limited  
1N/238 Karangahape Road  
Auckland Central  
Auckland, 1010  
New Zealand

Web: <https://www.cylinderboss.com>

Email: [info@cylinderboss.com](mailto:info@cylinderboss.com)